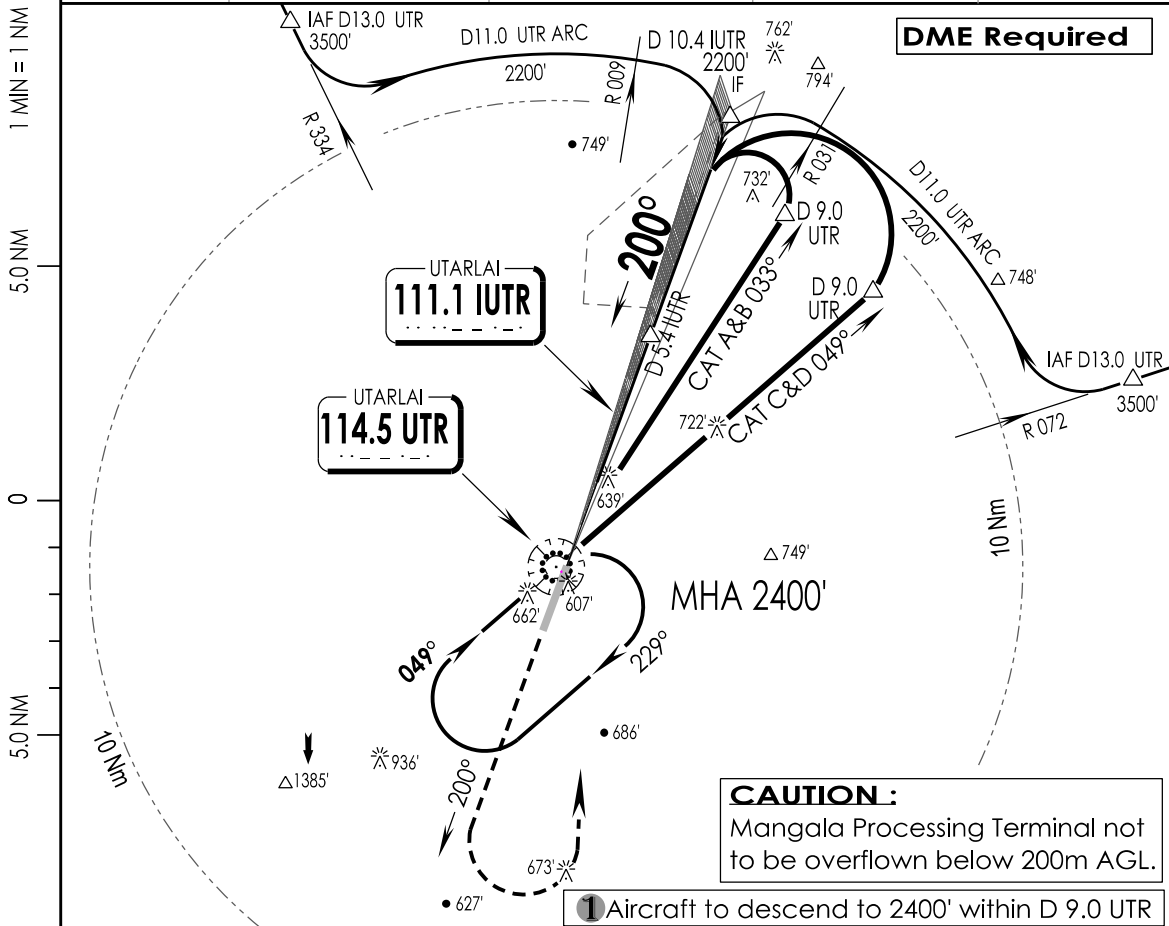


VIUT
UTTARLAI

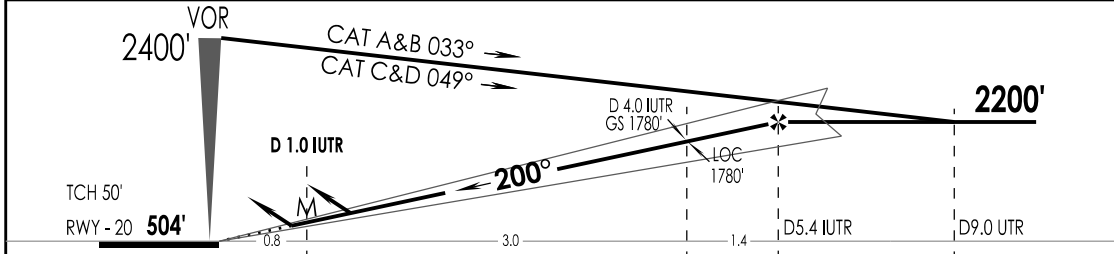
IAF
14 FEB 19

UTTARLAI, INDIA
ILS Z RWY 20

UTTARLAI Tower 123.2, VC, UC			UTTARLAI Approach 123.2, VC, UC		ATIS 114.5	
VOR UTR 114.5	LOC IUTR 111.1	FINAL Apch Crs 200°	GS D 4.0 IUTR 1780'	DA (H) 717' (213')	Apt Elev 505' RWY 504'	
MISSED APCH: Climb STRAIGHT ahead to 1600', then climbing Turn Left to join VOR hold at 2400' or as directed by ATC.						
Alt Set: hPa		Rwy Elev: 17 hPa	Trans level: By ATC		Trans alt: 4000'	



LOC (GS OUT)	IUTR DME	5.4	5.0	4.0	3.0	2.0
	ALTITUDE (ft)	2200	2090	1780	1460	1140



GND SPEED KTS	80	100	120	140	160	180	↑ 1600'	2400' ↓
GRADIENT 5.24 %	425	531	637	743	849	955		

STRAIGHT-IN LANDING RWY 20				CIRCLE - TO - LAND		
ILS		LOC (GS OUT) CDFA		Max Kts	MDA (H)	VIS
DA (H)	717' (213')	MDA (H)	890' (385')			
FULL	ALS OUT	FULL	ALS OUT			
A			RVR 1500m	100	1170' (665')	3300m
B				135		
C	RVR 550m	RVR 1200m	RVR 1100m	180	1330' (825')	3800m
D				205		

LIGHTING : CAT-II (20), CL15M(02/20), HIRL 60 M (02/20), TL (02/20), HIALS (20), PAPI (02L/20R), SALS (02)
CHANGES : LIGHTING IPDC, DTE OF OPS (T & H)